

Intake Valve RB Series



The Original One



APPLICATION: Installed on the compressor inlet to control compressor capacity. During normal operation the valve open and close in response to a control signal to meet the air demand. Stepless or two point capacity controls are available. At the shut-down a check valve stays closed to prevent back flow through the compressor also if the air flow is interrupted. Many solutions are available for stationary or mobile compressors.

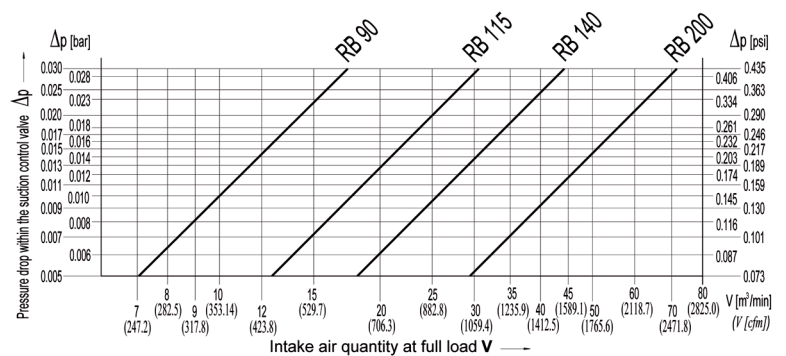
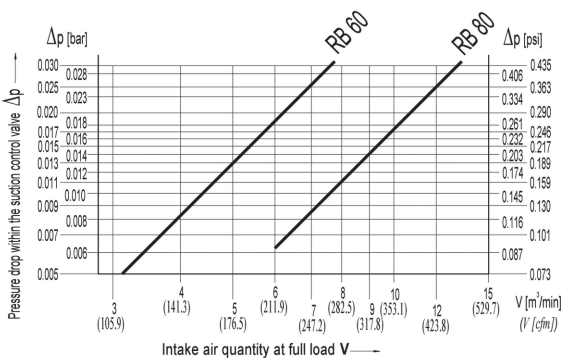
INSTALLATION: On the suction flange of the air-end, either directly or by flange adapt or, depending on the type of air-end. The valve must be connect to the signal pressure and solenoid valve.

REPLACEMENT: The stress on valve parts depends on compressor application and operating parameters. Inspect the valve and replace, using VMC spare parts kit, after 8.000 operating hours.

NOTE: The RB series is also available for Natural Gas and Water Lubricated applications.

TECHNICAL DATA

SIZE		RB60	RB80	RB90	RB115	RB140	RB200
Flow rate fully open		See diagram					
Nominal Diameter	mm - inch	Ø60 - Ø2,36	Ø80 - Ø3,15	Ø90 - Ø3,54	Ø115 - Ø4,53	Ø140 - Ø5,5	2xØ140 - 2xØ5,5
Working pressure		up to 16 bar - up to 232 Psi					
Type		RB...NR for Non-return control only RB...E for On/Off start-up system with suction control valve closed RB...P for Stepless control with suction control valve closed RB...PM for Mobile compressor with suction control valve open					
Adjustment		Adjustable control device to unload vessel through inlet manifold during idling					
Solenoid valve voltage		24V, 110V or 230V					
Materials		Housing in Aluminium alloy. Internal parts in Aluminium alloy anodized, Viton sealings, and Brass.					
Weight	Kg - lb	2,2 - 4,85	3 - 6,6	6,5 - 14,33	10 - 22,05	12,3 - 27,1	25,3 - 55,77



Intake Valve RB Series



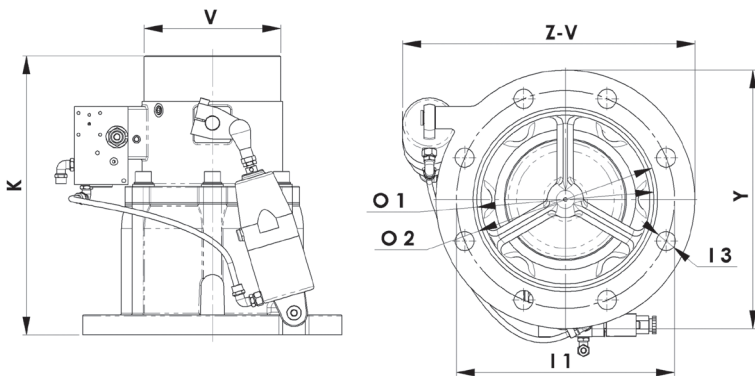
The Original One

DIMENSION DETAILS:

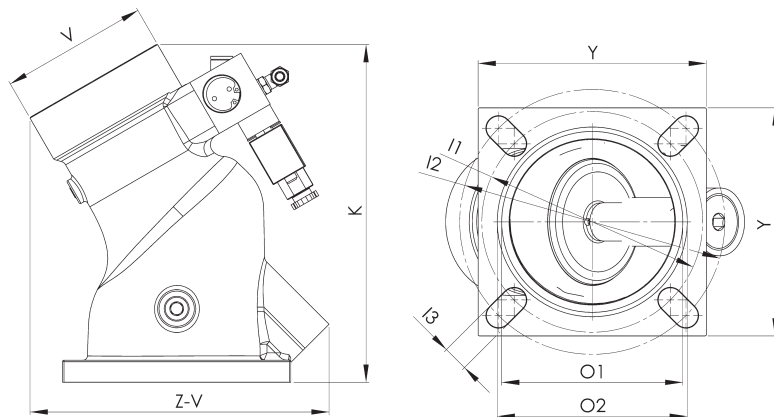
SIZE		RB60R	RB60T	RB60GTr	RB80	RB90	RB115	RB140	RB200
Bolt holes	Nr.	4	4	4	4	4	8	12	12
Y	mm - inch	125 - 4,92	135 - 5,3	135 - 5,3	155 - 6,1	155 - 6,1	Ø255 - Ø10,04	Ø340 - Ø13,38	Ø460 - Ø18,1
Z-V	mm - inch	177 - 6,96	177 - 6,96	177 - 6,96	203 - 8	310 - 12,2	300 - 11,81	351 - 13,81	500 - 19,68
K	mm - inch	197 - 7,75	197 - 7,75	197 - 7,75	230 - 9,05	238 - 9,37	308 - 12,13	321 - 12,63	350 - 13,77
V	mm - inch	Ø70 - Ø2,75	Ø70 - Ø2,75	Ø70 - Ø2,75	Ø100 - Ø3,93	Ø100 - Ø3,93	Ø150 - Ø5,91	Ø150 - Ø5,9	2xØ150 - 2xØ5,9
I1	mm - inch	Ø110 - Ø4,33	Ø129 - Ø5,07	-	Ø150 - Ø5,9	Ø160 - Ø6,3	Ø225 - Ø8,86	Ø295 - Ø11,6	Ø410 - Ø16,14
I2	mm - inch	Ø135 - Ø5,3	Ø150 - Ø5,9	Ø150 - Ø5,9	Ø180 - Ø7,1	Ø180 - Ø7,1	-	-	-
I3	mm - inch	Ø13 - Ø0,51	Ø13 - Ø0,51	Ø17 - Ø0,67	Ø17 - Ø0,67	Ø17 - Ø0,67	Ø17 - Ø0,67	Ø21 - Ø0,82	Ø25 - Ø0,98
O1	mm - inch	Ø86 - Ø3,38	Ø107 - Ø4,21	Ø107 - Ø4,21	Ø123 - Ø4,84	Ø127 - Ø5	Ø195 - Ø7,68	Ø248 - Ø9,76	Ø329,5 - Ø12,97
O2	mm - inch	Ø92 - Ø3,62	Ø113 - Ø4,45	Ø113 - Ø4,45	Ø129 - Ø5,07	Ø133 - Ø5,23	Ø203 - Ø8	Ø259 - Ø10,2	Ø341,5 - Ø13,44

Attention: The drawing below is not suitable for all models. Please log on to our website for specific drawings.

RB115 - RB140 - RB200



RB60 - RB80



RB90

