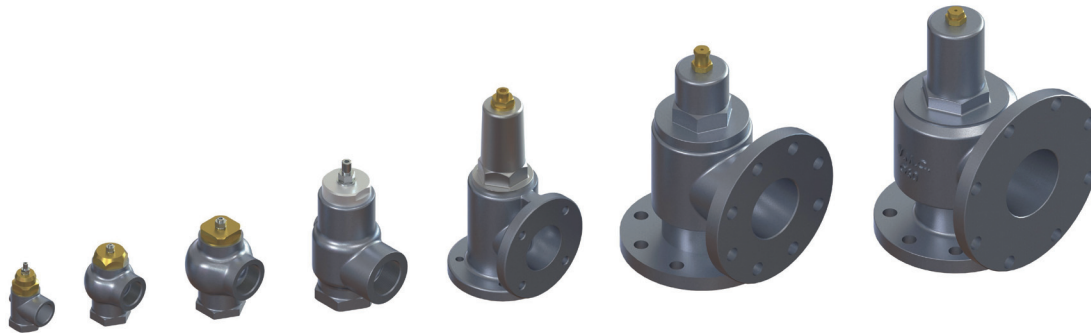


Minimum Pressure Valve



APPLICATION: The Minimum Pressure Valve which is installed after the oil separator, has two functions: • during start-up, the valve remains closed until the opening set-up pressure. Then it opens in order to maintain minimum pressure in the air-oil separator. In this way, pressure can lubricate the compressor unit; • during shutdown, the check valve is closed to prevent backflow from the line through the compressor.

INSTALLATION: The Minimum Pressure Valve is installed at the discharge port of the separator. It can be threaded or flanged.

REPLACEMENT: It depends on compressor applications and working conditions. Valve inspection and its replacement is recommended 8.000 running hours. VMC original spare parts have to be used.

NOTE: The Minimum pressure valve series is also available for Natural Gas and Water Lubricated applications.

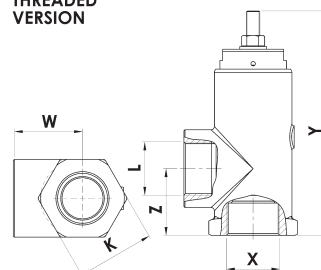
TECHNICAL DATA

Threaded Version		G10 1/2"	G10 3/4"	G26	G36	G46	G50T	Flanged version only	Flanged version only
Air Flow rate fully open	m ³ /min-cfm	1 - 35,31	1,5 - 52,97	3,5 - 123,58	6 - 211,86	12 - 423,72	22 - 776,82	40 - 1412,4	60 - 2118,6
Pressure Drop	bar-psi	From 0,03 to 0,2 bar From 0,435 to 2,9 psi							
Materials		Housing in Aluminium alloy anodized. Internal parts in Stainless Steel, Viton sealings and Brass.							
Set opening pressure	bar-psi	From 3 to 5,5 bar. Standard settings : 4,5 ± 0,25 bar From 43,5 to 79,8 psi. Standard settings : 65,25 ± 3,6 psi							
X		Rp 1/2"	Rp 3/4"	Rp 1"	Rp 1-1/4"	Rp 1-1/2"	Rp 2"	-	-
Y	mm-inch	86 - 3,38	86 - 3,38	106 - 4,17	132 - 5,2	196 - 7,7	276 - 10,86	-	-
Z	mm-inch	32 - 1,26	32 - 1,26	50 - 1,97	61 - 2,4	59 - 2,32	67,5 - 2,65	-	-
L	mm-inch	Rp 1/2"	Rp 3/4"	Rp 1"	Rp 1-1/4"	Rp 1-1/2"	Rp 2"	-	-
K (hexagon)	mm-inch	36 - 1,41	36 - 1,41	45 - 1,77	55 - 2,16	70 - 2,75	86 - 3,38	-	-
W	mm-inch	33 - 1,3	33 - 1,3	38,5 - 1,51	47,5 - 1,87	70 - 2,75	70,5 - 2,77	-	-
Weight	kg-lb	0,3 - 0,66	0,3 - 0,66	0,6 - 1,32	1 - 2,2	1,8 - 3,96	3,2 - 7	-	-

Flanged Version		Threaded version only	Threaded version only	G25F	G35F	G40F	G50	G55R	G60R
X	mm-inch	-	-	Ø30,5 - Ø1,2	Ø35 - Ø1,37	Ø50 - Ø1,96	Ø56,5 - Ø2,2	Ø80 - Ø3,15	Ø82 - Ø3,22
Y	mm-inch	-	-	95 - 3,74	113 - 4,44	200 - 7,87	276 - 10,86	281 - 11,06	328 - 12,9
Z	mm-inch	-	-	42 - 1,65	46,5 - 1,83	75 - 2,95	67,5 - 2,65	114,5 - 4,5	130 - 5,11
L	mm-inch	-	-	Rp 1"	Rp 1-1/4"	Ø40,3 - Ø1,58	Ø60 - Ø2,36	Ø80 - Ø3,15	Ø90 - Ø3,54
W	mm-inch	-	-	38 - 1,5	47 - 1,85	75 - 2,95	69,5 - 2,73	126 - 4,96	132 - 5,2
I (Inlet flange)	mm-inch	-	-	67 - 2,63	78 - 3,07	110 - 4,33	105 - 4,13	160 - 6,3	160 - 6,3
I (Outlet flange)		-	-	-	-	110 - 4,33	105 - 4,13	160 - 6,3	180 - 7
Flange Bores	mm	-	-	Nr. 2xØ11	Nr. 2xØ10,5	Nr. 4xØ17	Nr. 4xM12	Nr. 8xØ18	Nr. 8xØ18
	inch	-	-	Nr. 2x 0,43	Nr. 2x 0,41	Nr. 4x 0,67		Nr. 8x 0,71	Nr. 8x 0,71
Weight	kg-lb	-	-	0,6 - 1,32	1 - 2,2	3,2 - 7,05	3,2 - 7,05	7,5 - 16,53	8 - 17,63

Attention: The drawing below is not suitable for all models. Please log on to our website for specific drawings.

THREADED VERSION



FLANGED VERSION

